

# dotDefender v5.18 for IIS

## Installation Guide



**Applicure Web Application Firewall**

# Installation Process

---

The installation guide contains the following sections:

[System Requirements](#)

[Installing dotDefender](#)

[Troubleshooting](#)

## System Requirements

dotDefender operation requires any of the following:

Web Server: IIS 7.0, IIS 7.5, IIS8.0.

Supported Operating systems: Microsoft Windows 2008, Microsoft Windows 2012

## Windows 2008 Requirements

**Note:** This section concerns steps that have to be performed before installing dotDefender v5.18 on a *Windows 2008* server.

The following role services should be installed (In addition to the default role services installed with IIS):

### APPLICATION DEVELOPMENT:

ISAPI Extensions

ISAPI Filters

CGI

### SECURITY:

Windows Authentication

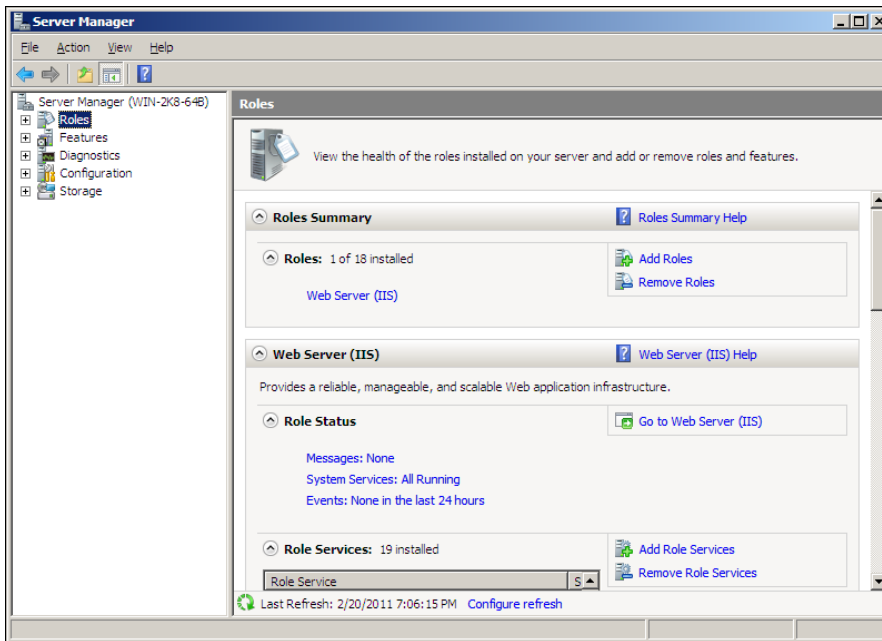
### MANAGEMENT TOOLS:

IIS6 Metabase Compatibility

**Note:** When selecting the parameters instructed in the steps below, leave other default definitions.

1. Select **Start > Server Manager** to open the Server Manager window.
2. Select **Roles** in the left pane.

3. Select **Web Server (IIS)**.

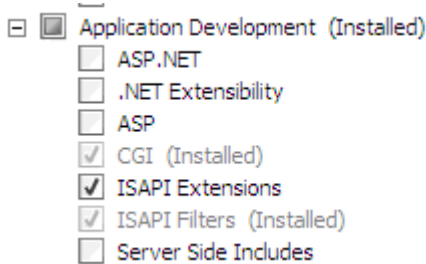


4. Select **Add Role Services**.

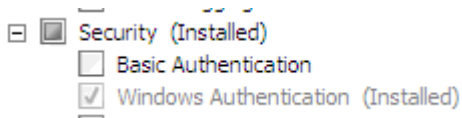
The Add Roles Wizard appears.

5. Under Application Development in the right pane, select:

- **ISAPI Extensions**
- **ISAPI Filters**
- **CGI**

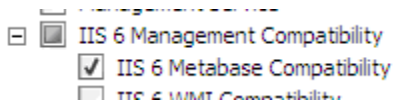


6. Under Security select **Windows Authentication**.





7. Under Management Tools > IIS6 Management Compatibility, select **IIS6 Metabase Compatibility**.



8. Click **Next**.

9. Click **Install**.

After installation, the Installation Results window appears with a message informing you that the Installation has succeeded.

**An IIS restart is required now.**

## Windows 2012 Requirements

**Note:** This section concerns steps that have to be performed before installing dotDefender v5.18 on a *Windows 2012* server.

The following role services should be installed (In addition to the default role services installed with IIS):

### APPLICATION DEVELOPMENT:

ISAPI Extensions

ISAPI Filters

CGI

### SECURITY:

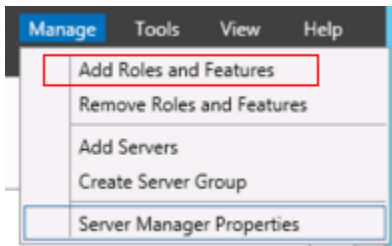
Windows Authentication

### MANAGEMENT TOOLS:

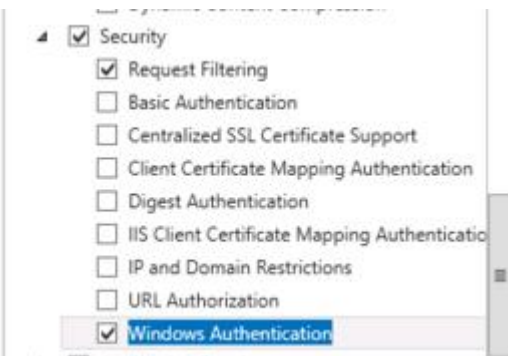
IIS6 Metabase Compatibility

**Note:** When selecting the parameters instructed in the steps below, leave other default definitions.

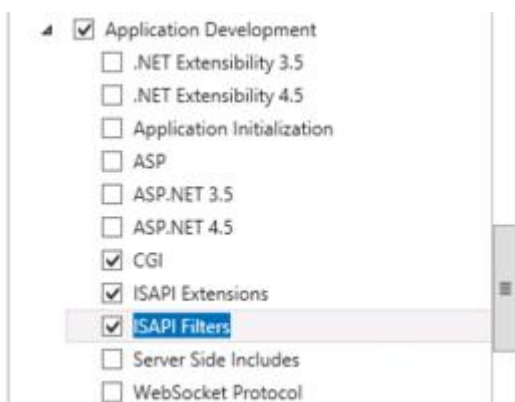
1. Go to **Server Manager** to open the Server Manager window.
2. Select **Manage** -> Add Roles and Features



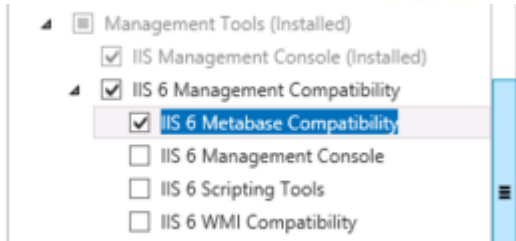
3. Select the needed Installation Type -> Next
4. Select the location -> Next
5. Expand Web Server (IIS)
6. Under Security select **Windows Authentication**



7. Under Application Development select **CGI, ISAPI Extensions** and **ISAPI Filters**



8. Expand the Management Tools and under IIS 6 Management Compatibility select **IIS 6 Metabase Compatibility**



9. Click **Next**

10. Click **Install**

After installation, the Installation Results window appears with a message informing you that the Installation has succeeded.

**An IIS restart is required now.**

**Now you are ready to install dotDefender v5.18 for IIS.**

**Continue to the next section.**

## Installing dotDefender

**Note:** The IIS Web server will be automatically restarted during the installation process.

1. Select from Applicure website's downloads page the version you plan to install.

You will be prompted to Save or Run the dotDefender installation. Click Save.

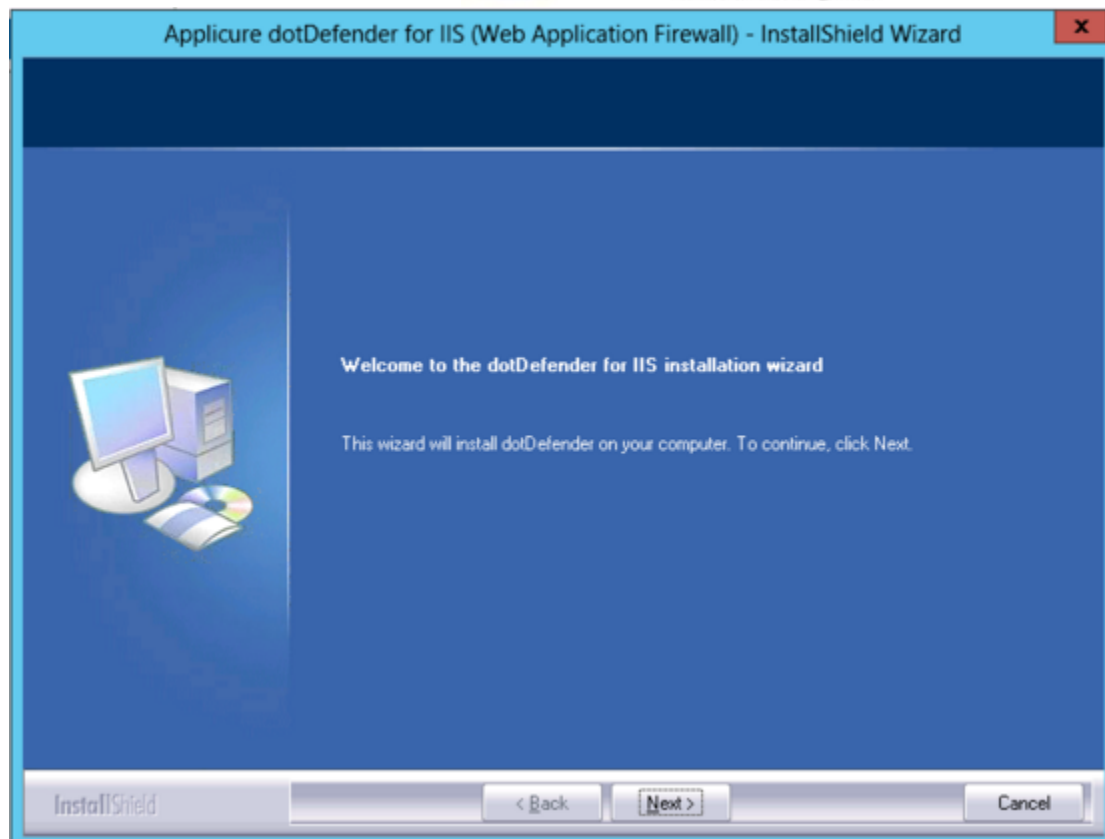
The file will begin downloading.

**Note:** Manually stop the IIS service before launching the installer.

(In the command prompt type: "iisreset /stop").

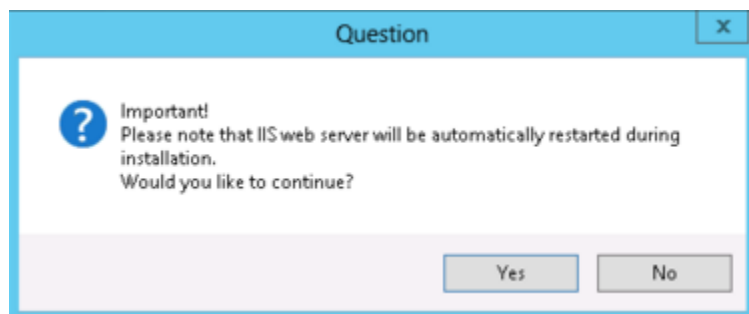
2. Double-click the .exe file.

- 3. The InstallShield Wizard begins and the Welcome window appears.**



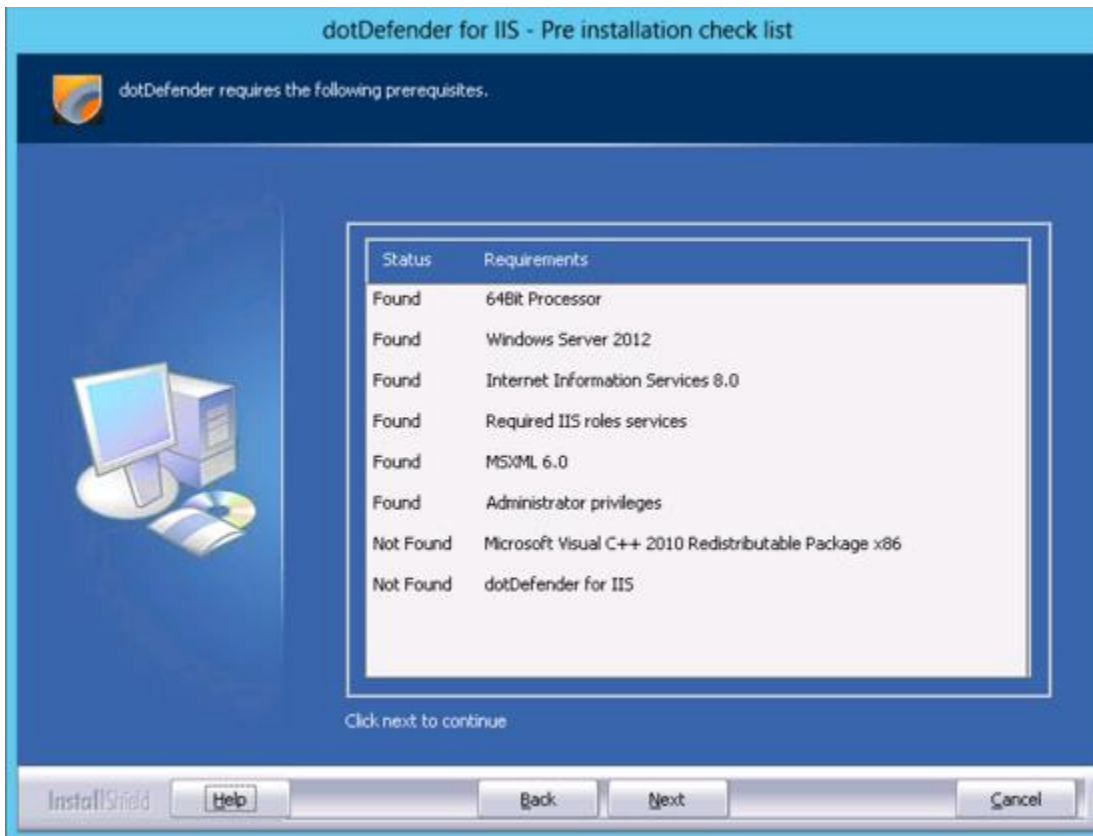
Click **Next** to continue.

4. A message appears warning you that the IIS Web server will be automatically restarted during the installation. Click **Yes** to continue.

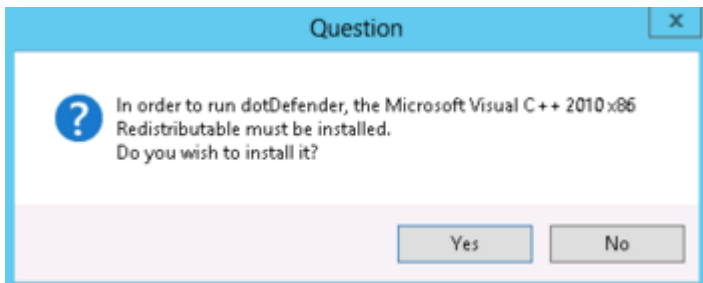




**5. Requirements screen** - the “Help” button will supply additional information if the server does not meet the requirements (Microsoft Visual C++ 2010 will be installed automatically).

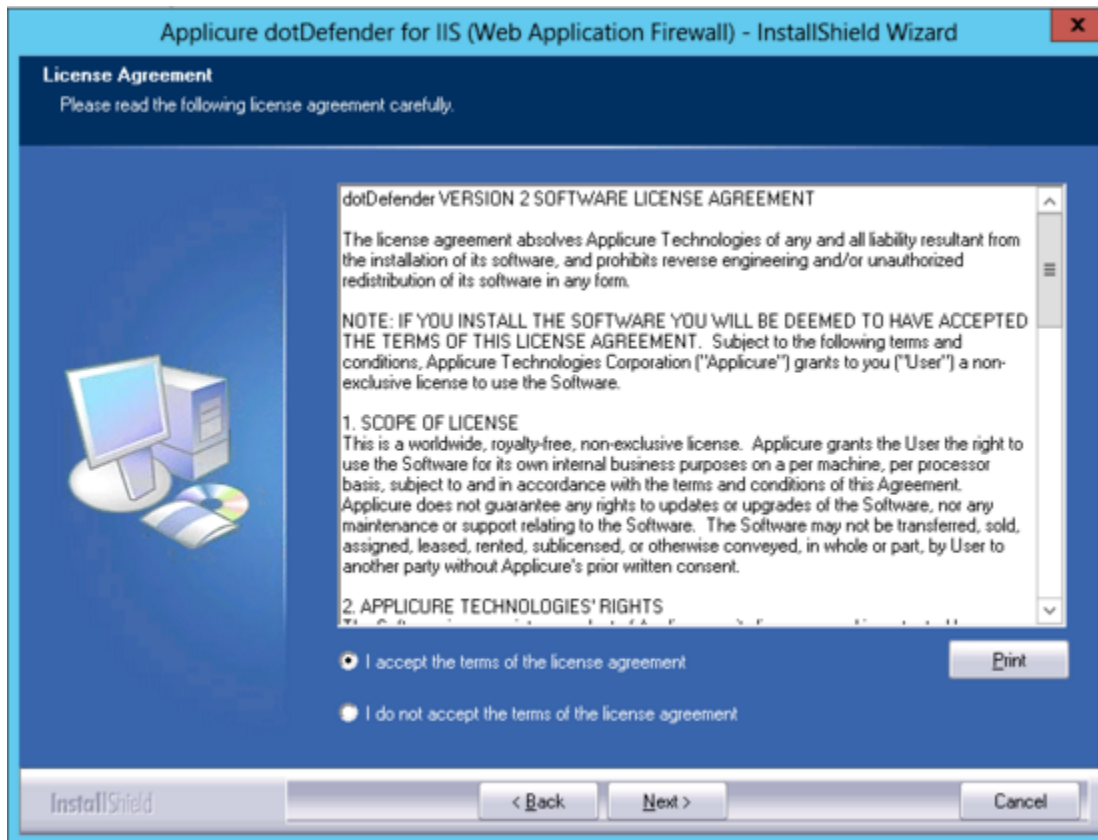


\*\*\* If the server is missing Microsoft Visual C++ 2010, it will be installed automatically after clicking “Yes” on the next window. \*\*\*



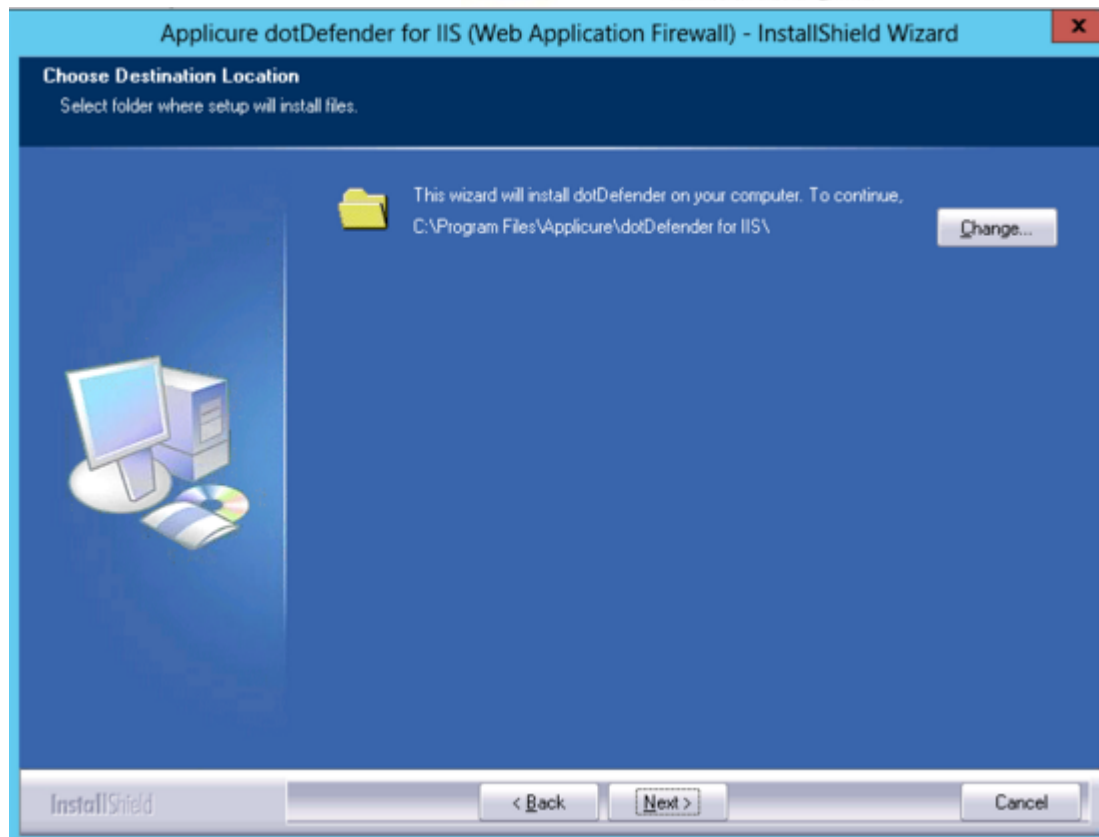
Click **Yes** to continue.

### **7. The License Agreement window appears.**



Read the license and select "**I accept the terms of the license agreement**". Click **Next**.

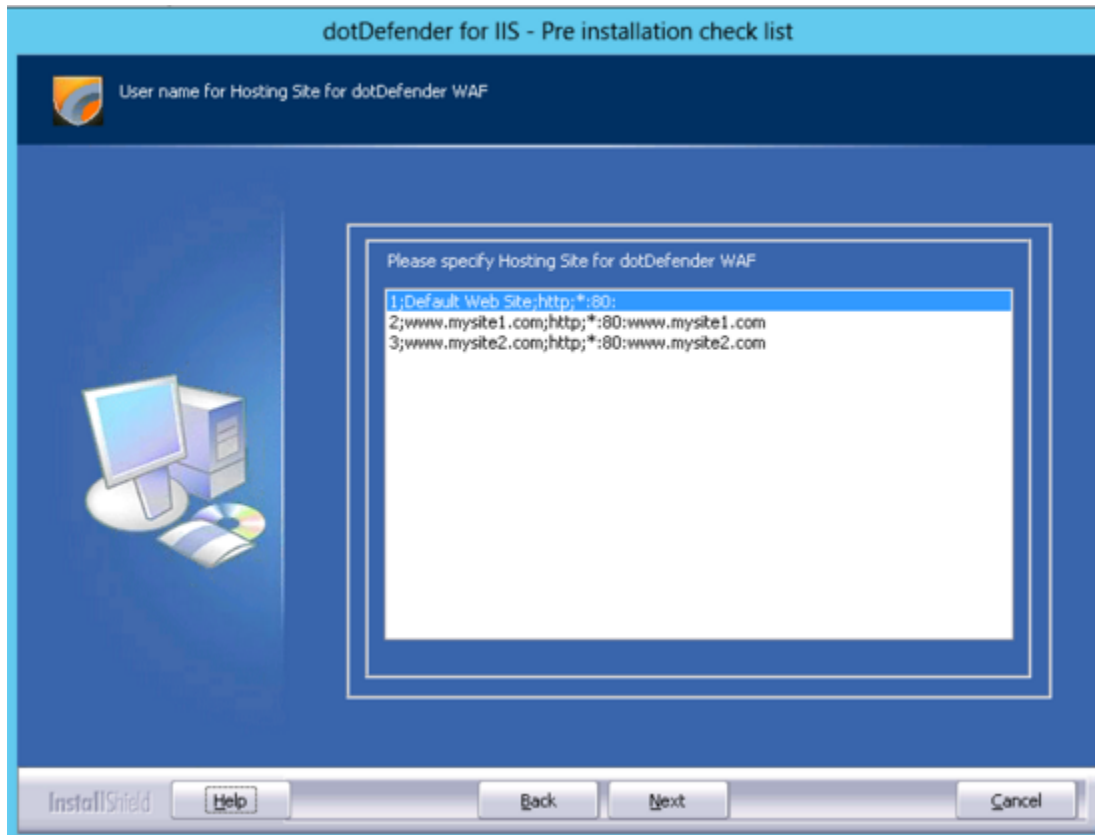
### **8. The Destination Location window appears.**



Use the default Destination Location or click Change to browse and select the directory in which you want to install the dotDefender files.

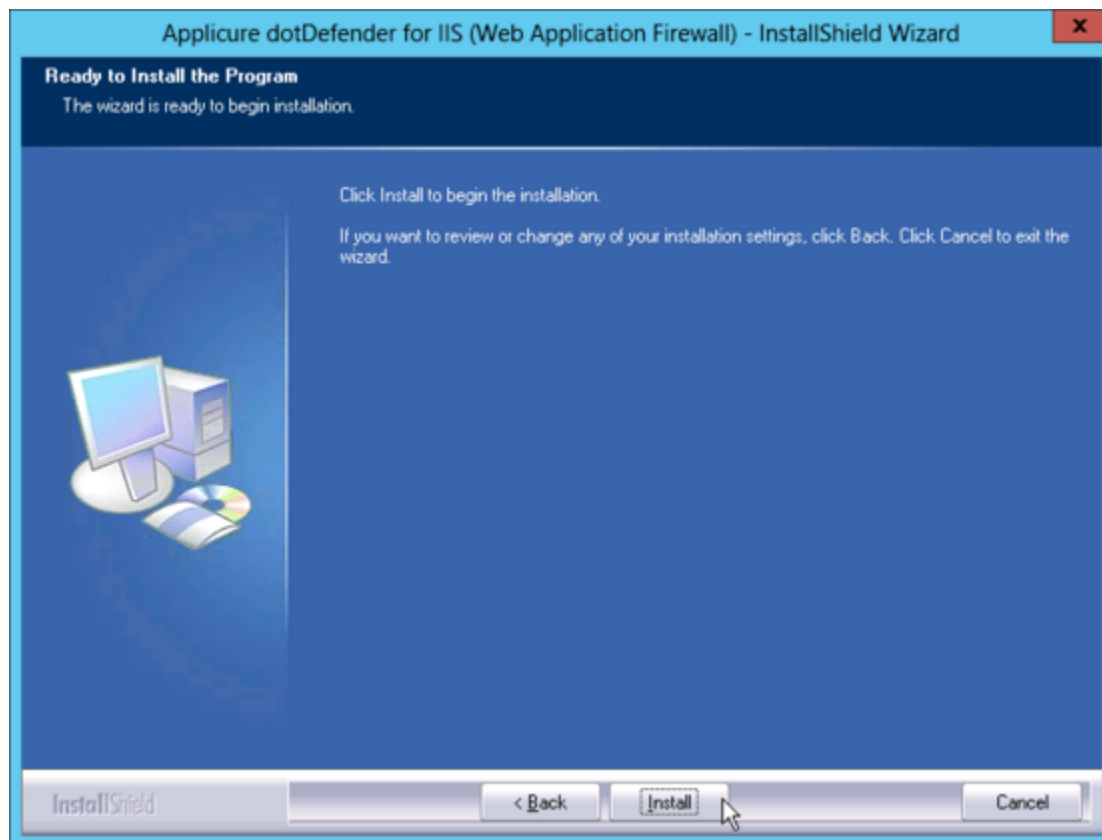
Click **Next**.

**9. The Hosting Site window appears.**



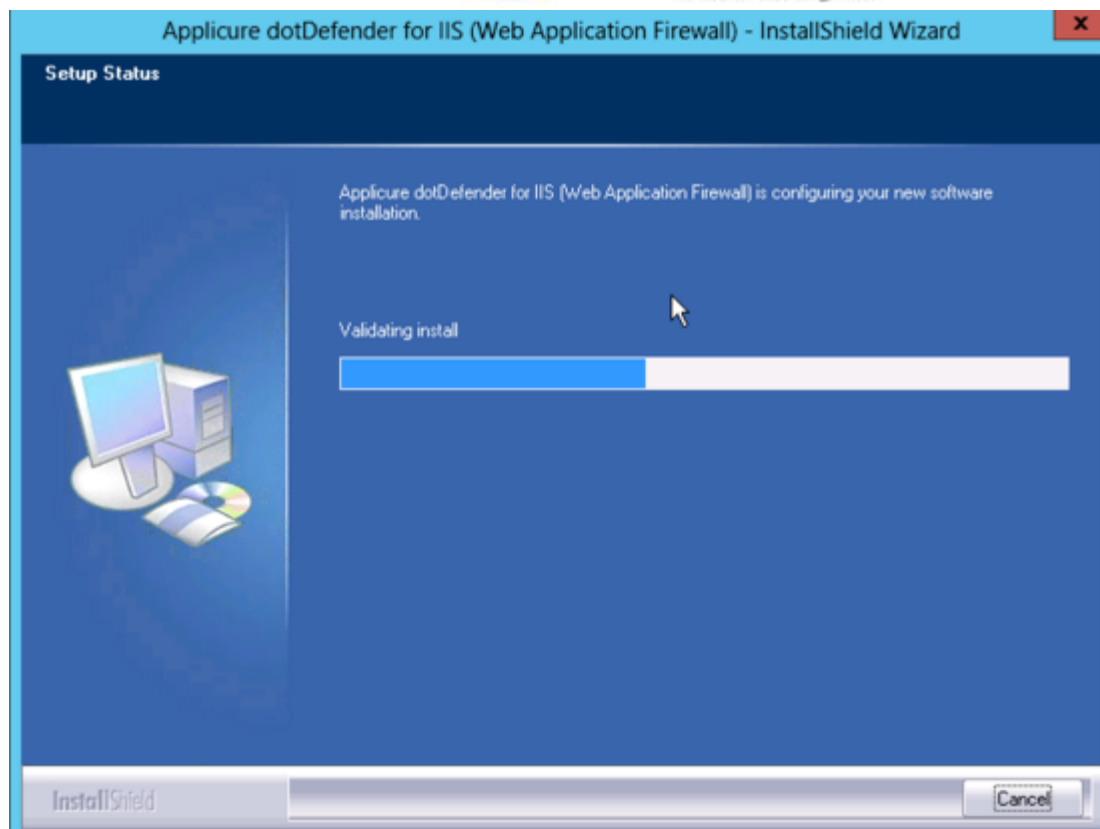
Select the site under which you would like the dotDefender Virtual Directory will be installed. Click **Next**.

## 10. The Installation window appears.



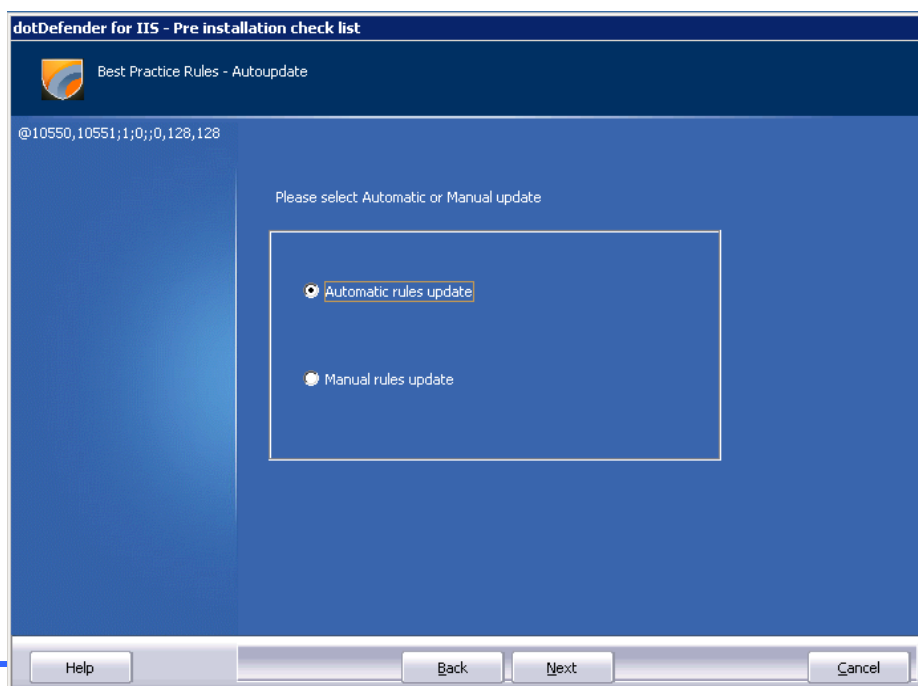
Click **Install** to begin the installation.

The installation should take no more than a few minutes.



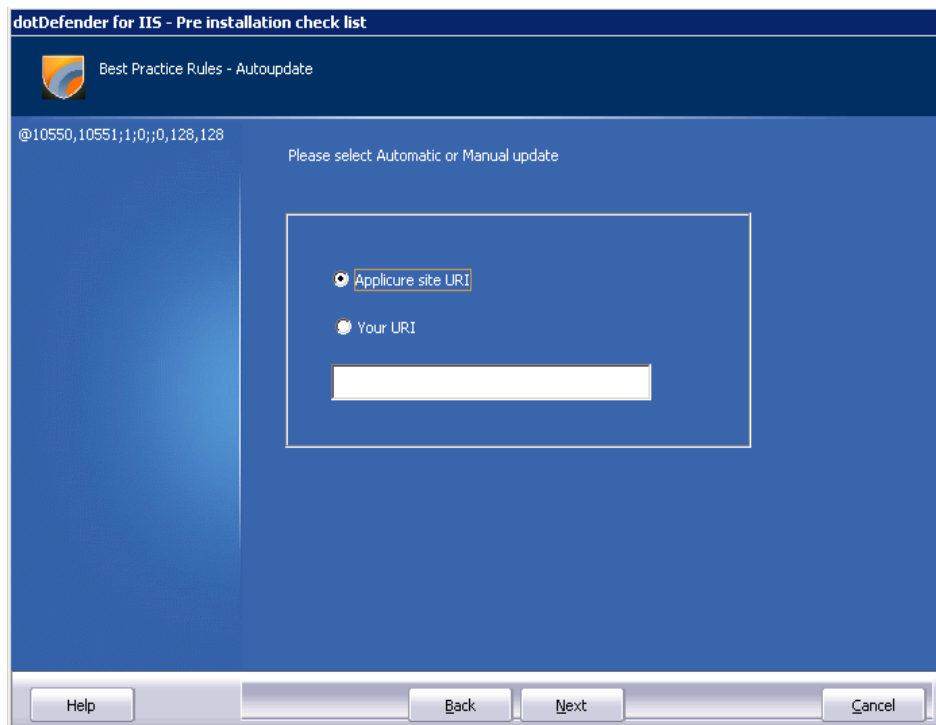
## 11. The Rule-Updates window appears.

Select either **Automatic Update** or **Manual Update**, and then **Next**.



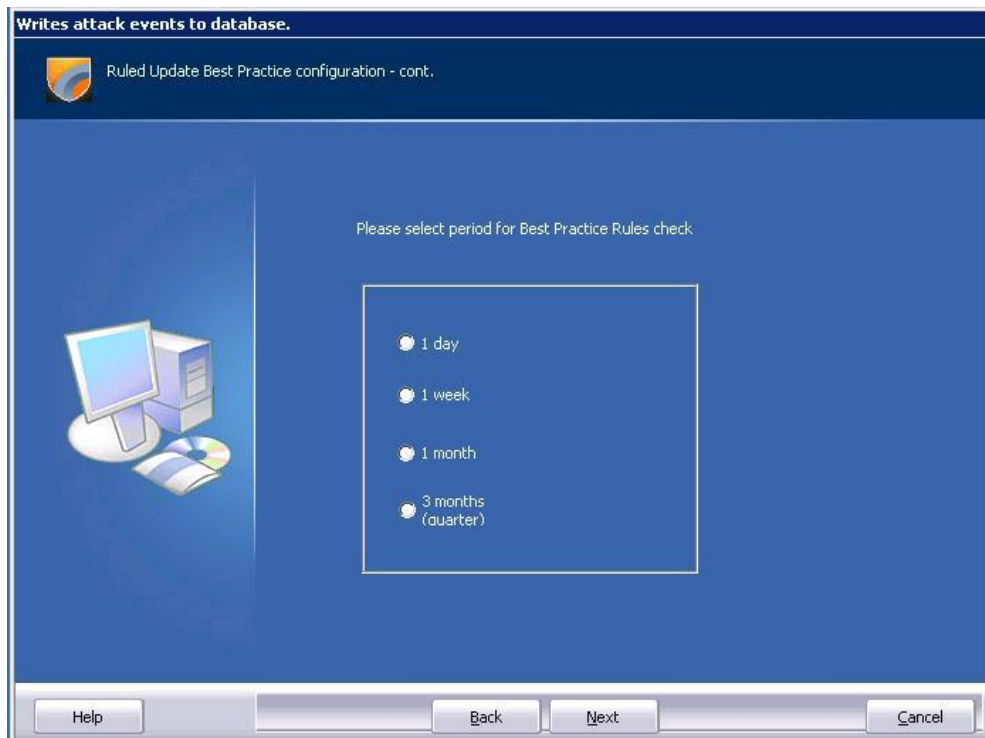
## 12. The Rule-Updates window appears.

Select to download the rules from either **Applicure's website** or a **custom location**.



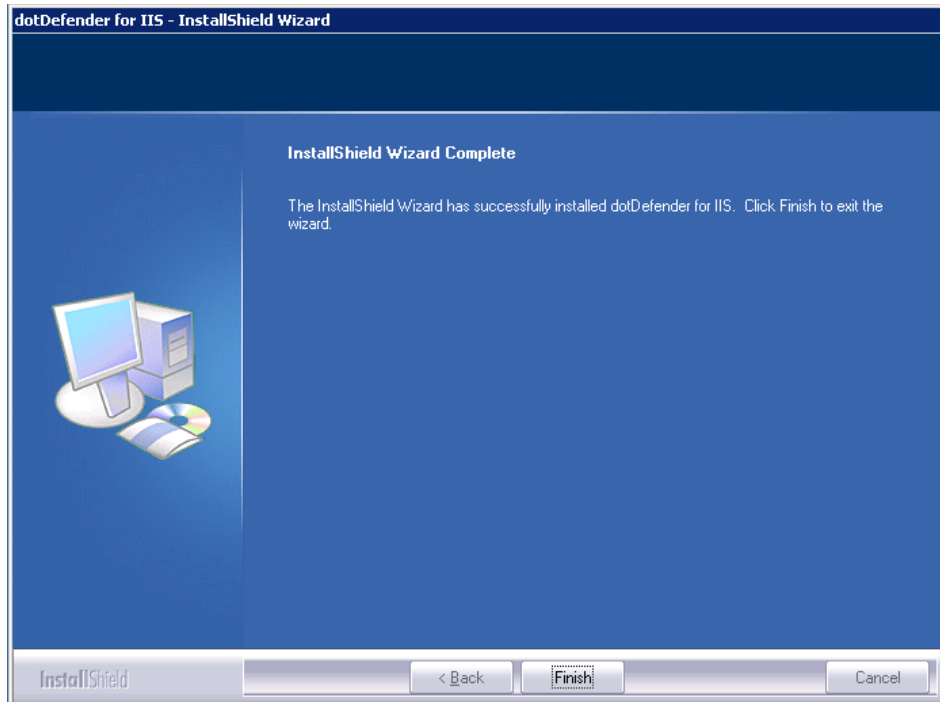
### **13. The Rule-Updates window appears.**

**For automatic update, select the frequency of the updates and then **Next**.**





When the installation has completed, click **Finish**.



After the installation is finished, please verify Microsoft Redistributables are installed (install them if needed):

<http://www.microsoft.com/en-us/download/details.aspx?id=5555>

<http://www.microsoft.com/en-us/download/details.aspx?id=14632>

**Note:** Your websites are **not** protected until you activate a valid license!

**Note:** We recommend manually restarting the IIS service after the installation has finished.  
(In the command prompt type: "iisreset").

Once installation has finished and dotDefender is installed on your machine, a license must be applied to enable blocking and protection.  
For licensing your dotDefender, please contact your AppliCure account representative or the Support Team.

# Troubleshooting

---

If you experience any issues loading the dotDefender interface, please review the following points to isolate your problem.

- 1)** Login must be done using an Administrator account. Make sure the user is included in the groups "Administrators", "dotDefenderAdmins" and "IIS\_WPG"(IIS6) / "IIS\_IUSRS"(IIS7).
- 2)** Check ISAPI filters. (Websites -> properties -> ISAPI Filters)  
If an ISAPI filter called URL-Scan is present, it will prevent dotDefenderWS.exe service from running. You must add an exception for dDefender in URL-Scan.  
In addition, make sure that either an extension (IIS6) or a "dotDefenderModule" (IIS7) exists.
- 3)** The license.dat file may be corrupted.  
Open the file, and if you see strange characters instead of clear text, it is corrupted. Replace the license.
- 4)** The dotDefender virtual directory is placed under the Default website.  
If the default website is stopped, missing or working in a different port (FTP port 21 for example) the installer will not create a virtual directory.  
If a virtual directory isn't found, create it manually under a different site (please contact the Support Team and ask for instructions).
- 5)** Accessing the Default website from within the server sometimes may cause troubles.  
Try accessing it from outside.
- 6)** Avoid .exe filtering. It might block the "dotDefenderWS.exe" file.
- 7)** In case you are NOT using the 'Administrator' account, make sure to disable the UAC.

Please help us help you!

Link to our knowledgebase:

[http://applicuresupport.helpserve.com/index.php?\\_m=knowledgebase&\\_a=view&parentcategoryid=12&pcid=0&nav=0](http://applicuresupport.helpserve.com/index.php?_m=knowledgebase&_a=view&parentcategoryid=12&pcid=0&nav=0)

[support@applicure.com](mailto:support@applicure.com)